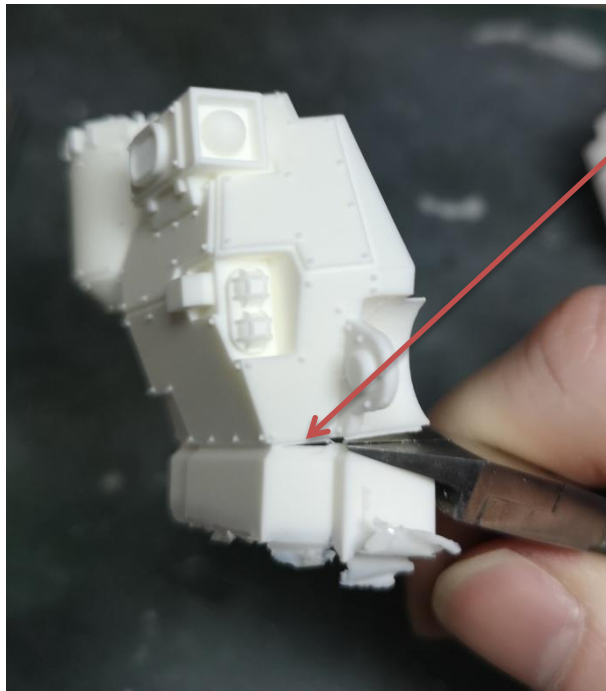
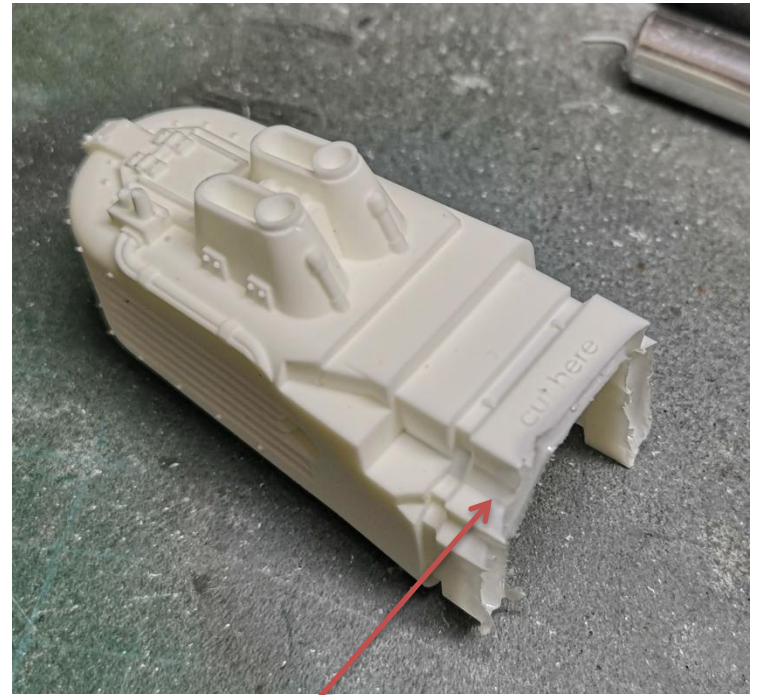
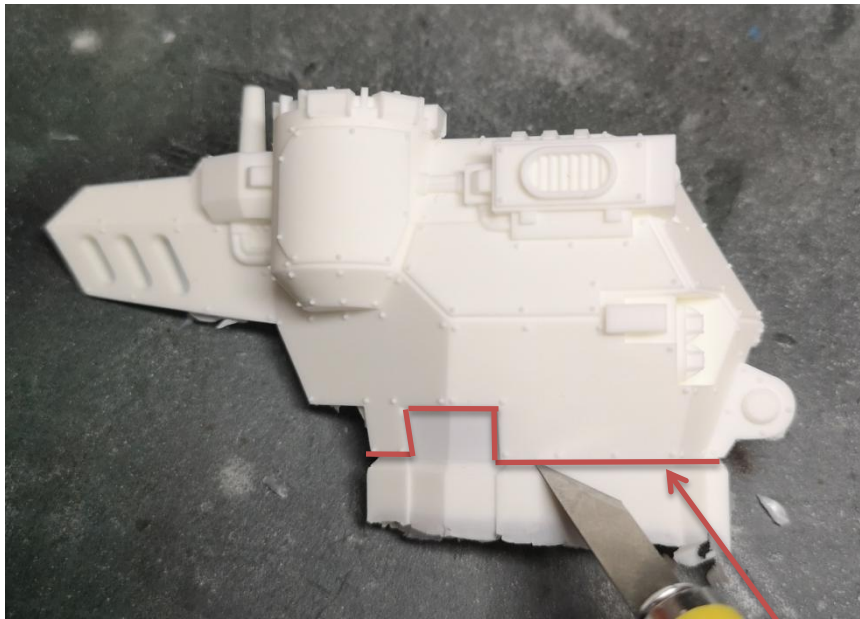


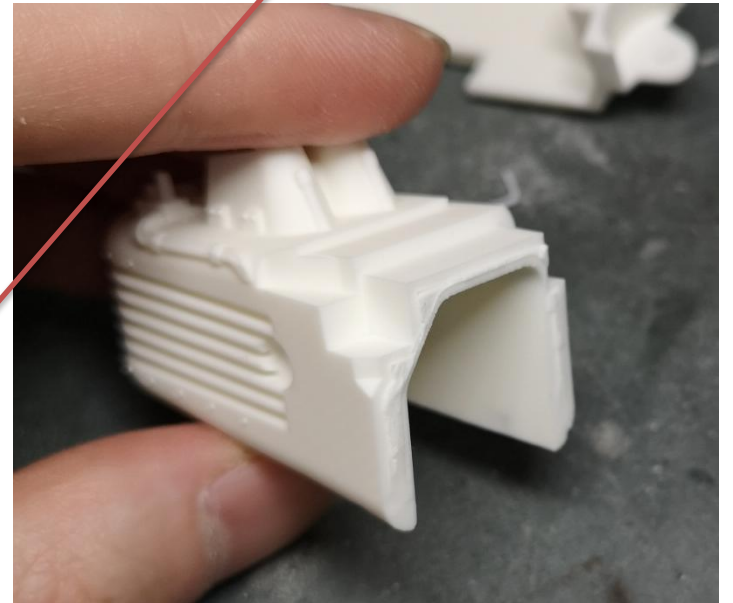


Check if all parts are included and have no defects



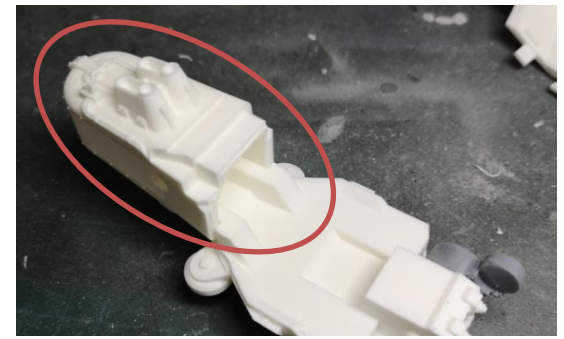
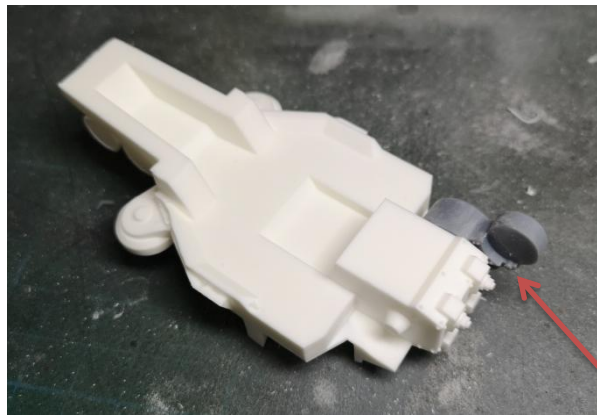
Cut along the edge to create an intended breaking point

Remove the feeder block





Dry fit all the parts before you glue

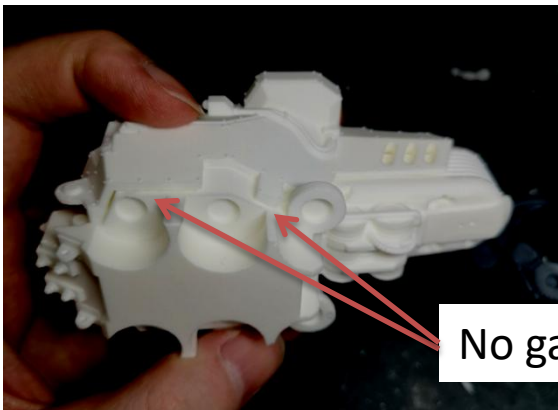


Do not glue this part yet

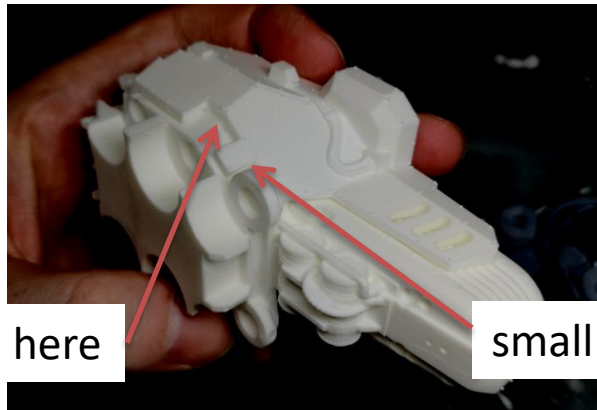
The arms must be glued downwards. The photo is wrong.



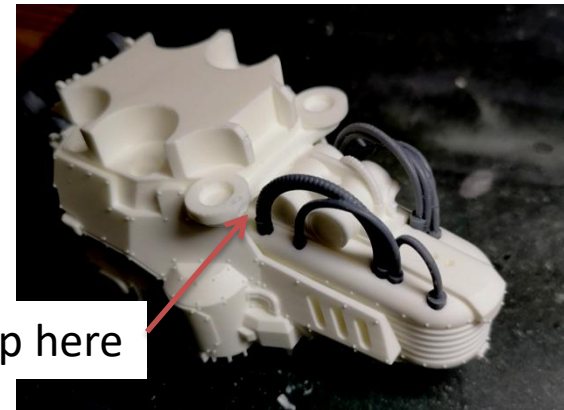
Glue it together with the sidewall



No gaps here



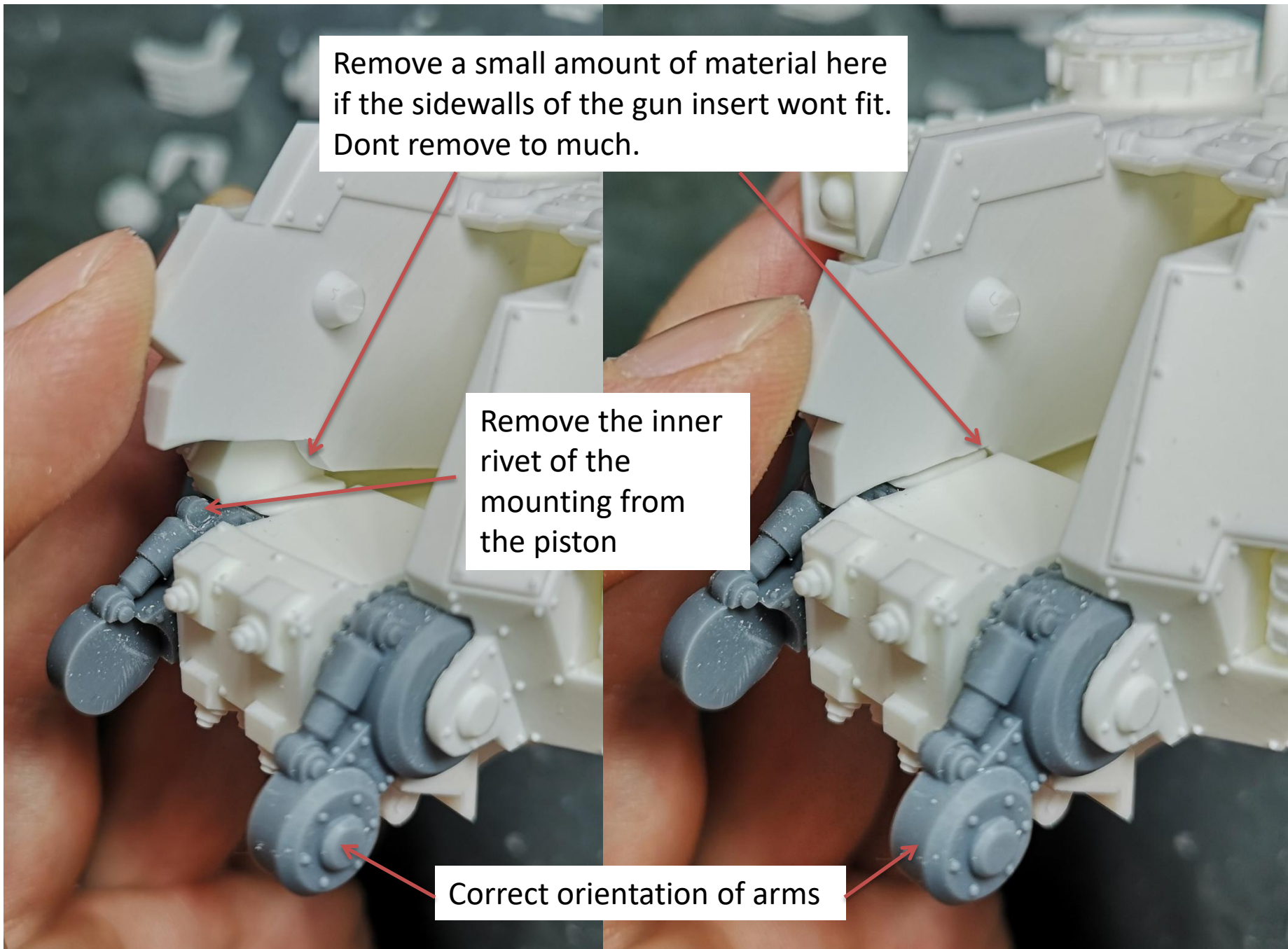
small gap here

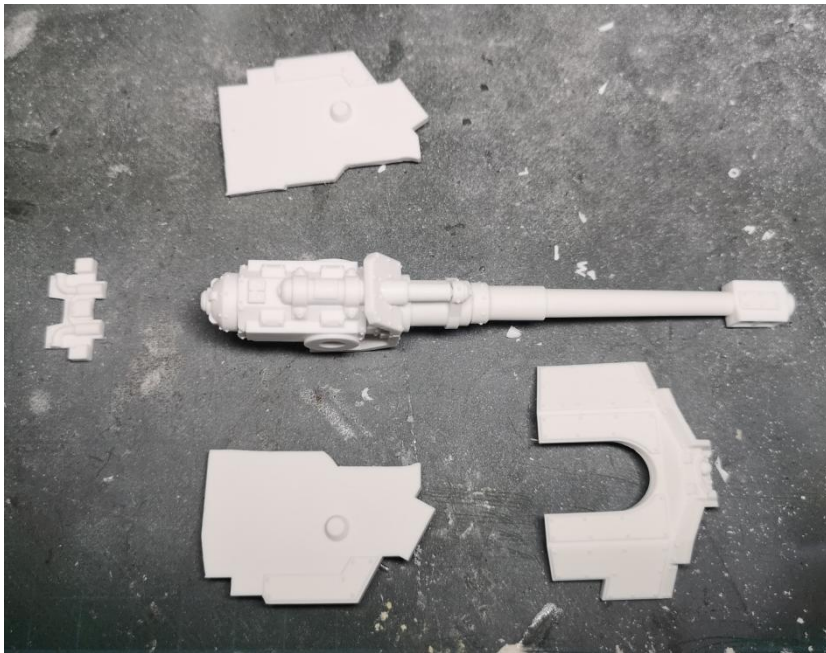


Remove a small amount of material here if the sidewalls of the gun insert wont fit. Dont remove to much.

Remove the inner rivet of the mounting from the piston

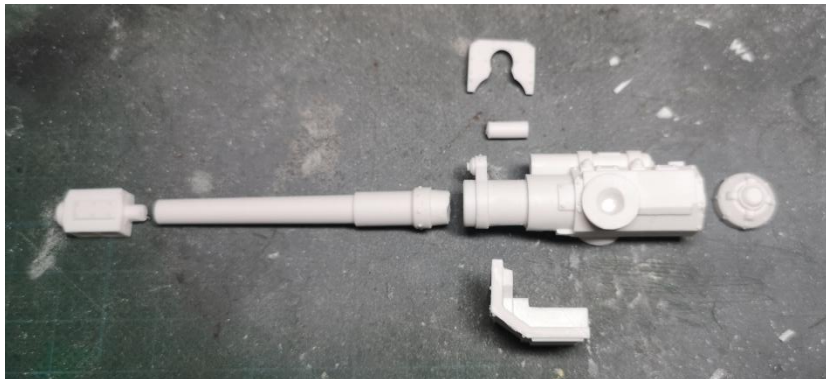
Correct orientation of arms





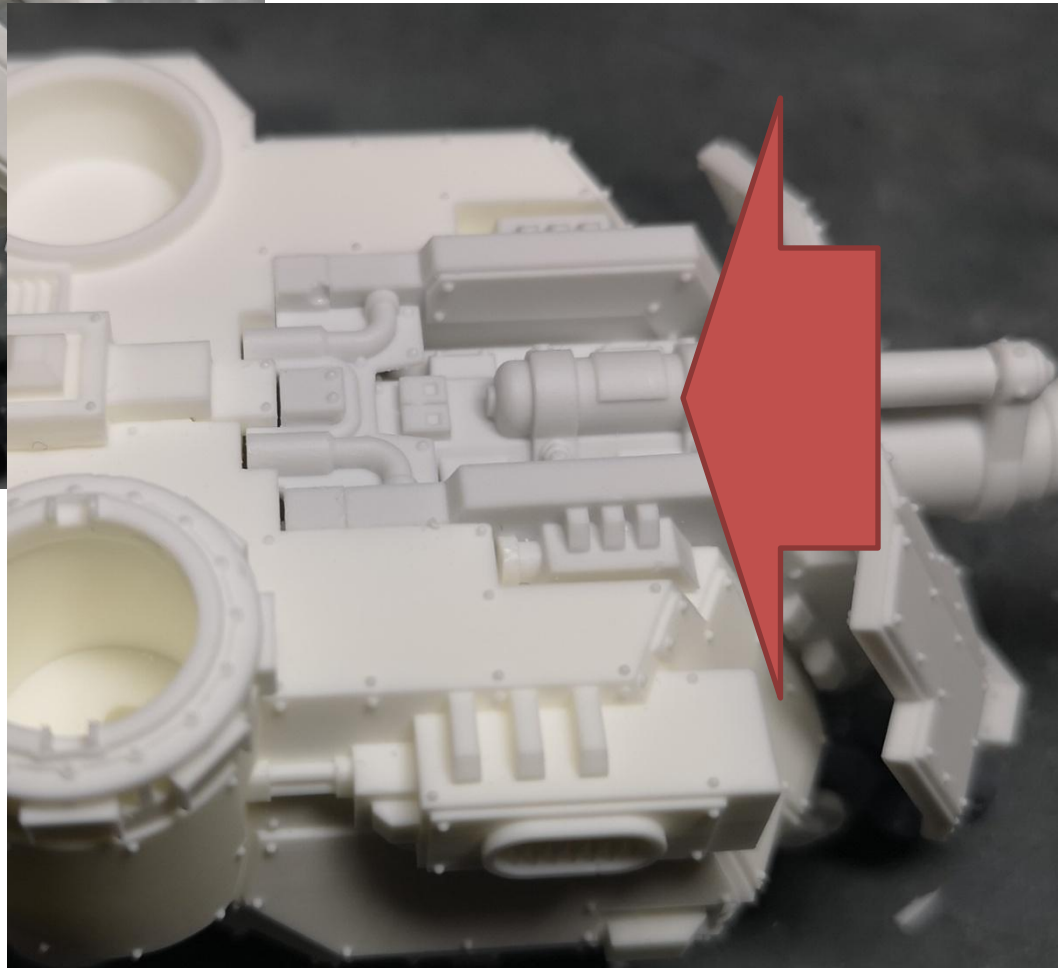
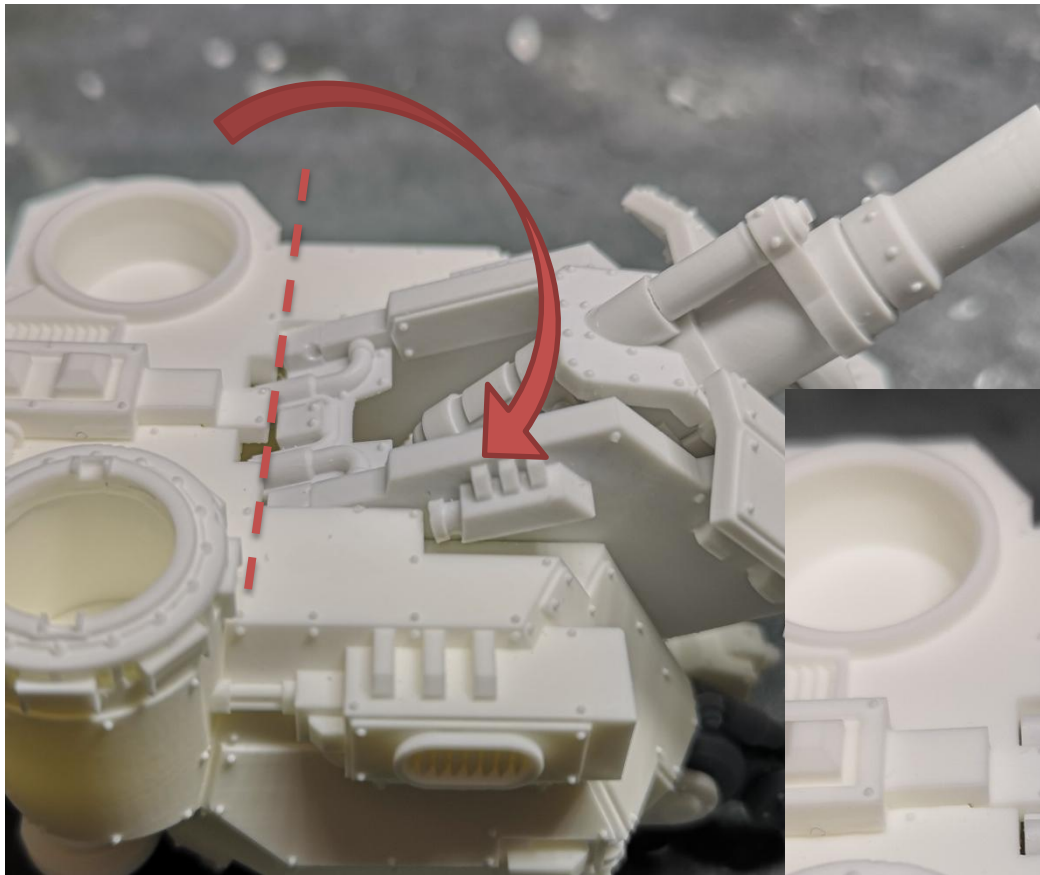
Every gun insert consists of the same parts:

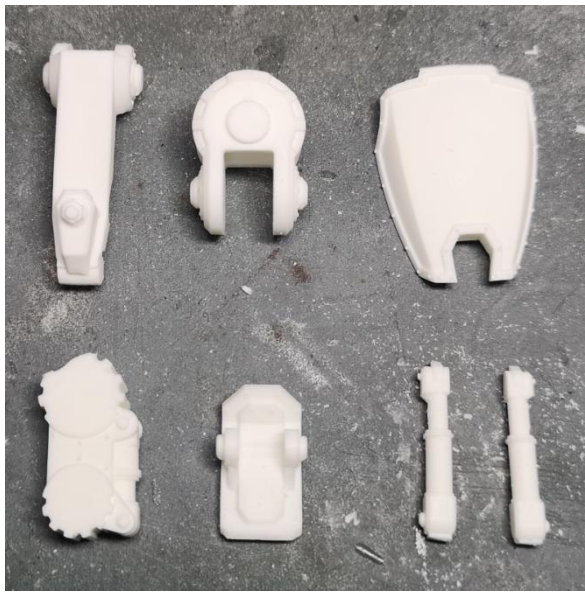
- The gun body
- 2 sidewalls
- 1 rear cover (might be bigger)
- 1 front cover or visor



Remove the „LOW“ or „UP“ text







Use a spacer during the assembly of the legs.



finish